



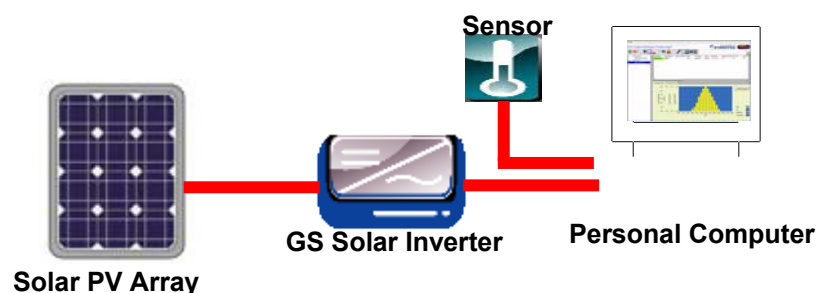
SEA Solar Energy Australia

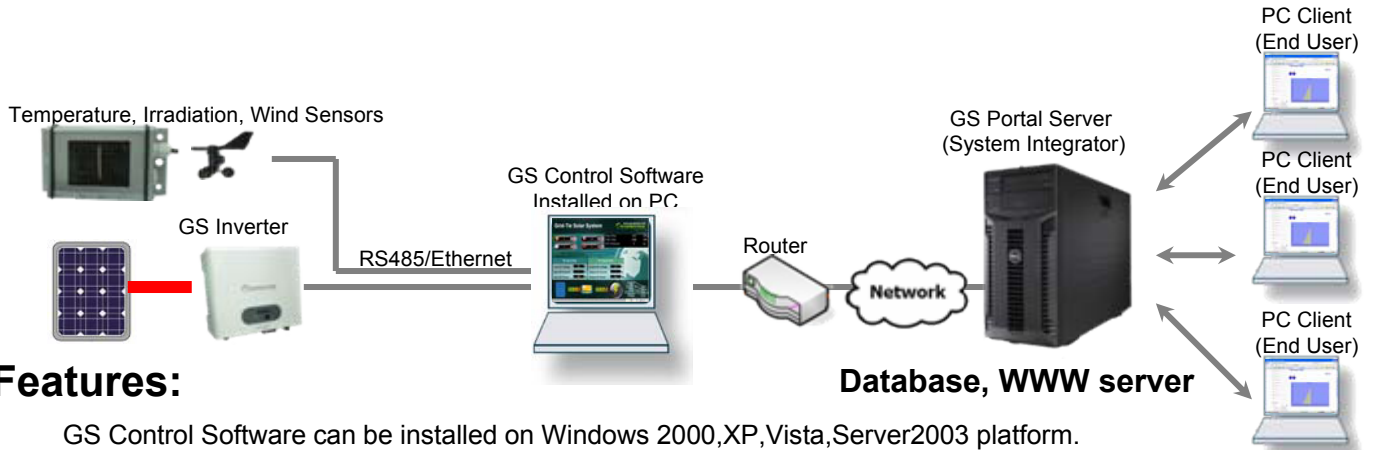


GEOPROTEK Solar Control Software

Monitor your Solar System on PC

GS Control Software is used to monitor data from GS Inverter on PC. You can read the Vpv(V), Ipv(A), Ppv(W), kWh, Temperature, Efficiency, Alarm Status, Fac, Zac...etc information from GS Inverter. You can connect your PC to GS Inverter via RS-232(with a RS-232 to RS-485 converter), USB (with an USB to RS-485 converter), Bluetooth, or Ethernet. It also support peripheral sensors like Irradiation, temperature, or wind speed/direction. As you connect to the internet, the software can send Email and GSM message automatically as alarm occurred or report time. For maintenance or management need, GS Control Software can send data to the GS Portal Server. User can review the data on the web site only by an IE web browser.



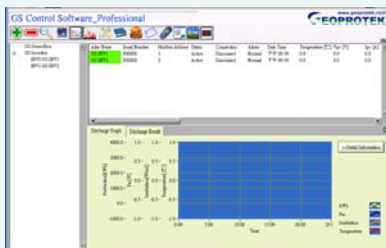


Features:

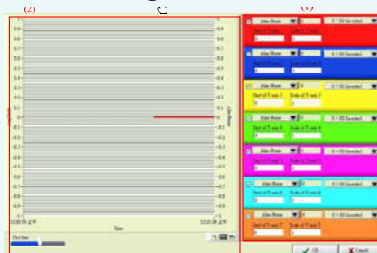
- GS Control Software can be installed on Windows 2000,XP,Vista,Server2003 platform.
- You can add/remove/modify the monitoring inverters, you can connect up to 50 inverters.
- You can customize the display screen include the background image, data display position, format, color even the data source that provide the great flexibility to meet customer need.
- All raw data, daily, weekly, monthly, yearly reports will be saved in Excel file (.CSV), you can download it from FTP.
- The software integrates many peripheral products like Irradiation, temperature sensors, LED display, Web camera... etc to meet different customer needs.
- Build-In Web Server that allow user to review the data via IE web browser in remote PC.

	Read data and status from Inverter		Event review and alarm status check		History graph and real time chart display
	Sending Email & GSM report and alarm status		Support Irradiation and temperature sensor		Remote monitoring by GS Central Management
	Digital photo frame display function		Customized display screen for customers		Build-in web server allow to remote review by IE

Main HMI



Diagram



Display Screen

